

# Dyslexic Advantage

## NEWSLETTER

### 2022 STEM INGENUITY AWARDS



- HENRY WINKLER
- PTSD AND DYSLEXIA
- AUDIO FOR DRIVERS TEST
- WHAT TO DO THIS SUMMER
- RESEARCH VOLUNTEERS?
- DYSLEXIA NEWS



Fernette Eide MD, Editor

Congratulations to this year's STEM / STEAM Ingenuity Award winners! Thanks to our sponsors and Premium subscribers, we're able to reward these hard-working and creative students! Thank you for supporting the next generation!

Fernette and the Dyslexic Advantage team

Become a **Premium Subscriber** and discover the most comprehensive resource on dyslexia in the world. You can sign up for an individual subscription or gift a school with institutional subscription. Don't forget there is a **Homeschooler's** course for parents and, for teachers, a clock hour course that provides professional development credits (**Dyslexia for Teachers**).

The **NEUROLEARNING** Dyslexia Screening App is \$39.99 and available for children and adults 7-70 years old. iPad, iPhone, Android, and Kindle Fire.



The app may be used to identify and qualify for services such as Benetech's huge free library of e-books.

Thank you volunteers Shelley Wear, Trish Seres, Dayna Russell Freudenthal, and Michelle Williams for their astute critique and proofing. Thanks to Lady Grace Belarmino for beautiful design and layout.

**PREMIUM**

Editor's Note: to make our publications easier to read, we will avoid use of italics and certain types of fonts.

Newsletters can be read online **HERE**. This issue will be available on the Joomag site for 3 months and can also be downloaded as a pdf file.



# CONTENTS

DYSLEXIC ADVANTAGE ISSUE 78 JUNE 2022 NEWSLETTER

**4**

**INGENUITY AWARDS  
2022**



**13**

**FIND THE VERY BEST  
FOR YOURSELF**



**15**

**PTSD AND DYSLEXIA**



**18**

**WHAT SHOULD WE DO  
THIS SUMMER?**



**23**

**AUDIO STUDY  
FOR DRIVERS TESTS**



**26**

**DYSLEXIA NEWS**



**29**

**ARTSHARE**



# INGENUITY AWARDS 2022

## GRAND PRIZE WINNER

### Arden, 13 BeeCool App

Congratulations to Arden and her team for winning the Grand Prize of the 2022 Ingenuity STEM / STEAM Awards.

Arden is an 8th grader at Shorecrest Preparatory in Florida. Her teacher is Dr. Anna Baralt. Her project, titled BeeCool is AMAZING!

### BACKGROUND:

Beehives are stacked, covered, and transported on semi-trucks for cross-country transport to aid in pollination. One problem faced by commercial beekeepers is hives overheating due to the close confinement of the hives. In their natural habitat, bees will use their wings to fan the nest, leave the hive

to increase airflow, or leave the hive to look for water. But when bees are being transported, they can't do those things due to their confinement on the trucks. Drivers may have to pull over, find a water source, and hose down the hives. If the temperature of a hive stays above 100°F, the queen can die, become sick, and the eggs she lays can be damaged. The brood, or baby bees, can also die. This is problematic because of how crucial bees are to our economy and food supply. Eighty percent of flowering plants are pollinated by bees, including 90 different food crops, and  $\frac{1}{3}$  of the food you eat is impacted by this pollination.



Arden thanks her teammates, Leilani, Gaston, Ethan, Chris, and Will, and Dr. Anna Baralt, her teacher.



Our driving question for our work is: How can we help commercial truck drivers access water during transportation to keep bees from overheating? Truck drivers need to hose down the hives regularly before they overheat as well as to provide water for the bees, but it is difficult for them to know when hives are overheating as well as the location of close water sources, especially when there are traffic delays, their trucks break down, or they are not on their typical route.

After completing extensive research we came up with the following ideas: a shock absorption system to reduce trauma to the hive (trucks already have this), a new hive design since hives have not changed since the 1800s (beekeepers won't pay for new hives), reflective paint for hives to reduce temperature (most hives already white, added expense), a reflective net for hives to reduce temperature (already exists), an automatic misting system for the trucks (too much weight), a cooling system with fans for the trucks (too expensive), and an app to identify water locations. We presented our ideas and received feedback from many experts in the industry before selecting our final solution. Our final solution is to build a mobile application called BeeCool.

The impact of our app is to reduce the percentage of bees that die during transportation due to overheating, which will impact the number of bees available to pollinate crops. For example, bees are shipped to California for almonds from February to March, to Florida for citrus fruits from March to April, and to Pennsylvania and New York for apples from April to May. The more bees are available to pollinate, the better the crop yield. Additionally, less loss of hives reduces costs for the beekeepers themselves.

## INVENTION:

BeeCool identifies the locations of water sources along major highways such as gas stations, public rest stops, fire stations, and other public water sources that can be easily accessed by truck drivers to hose down beehives. The GPS feature of the app will guide truck drivers to water sources within a five-mile radius of the highway they're driving on and will give them directions to the closest water source. After the truck driver is finished spraying down the hives, they will drive back onto the nearby highway and continue to their destination.



**Multisensory solutions for reading.**

Since 1997, we have turned over 500,000 struggling students into thriving students.

We created a product that anyone can use to be a successful **Orton-Gillingham** based tutor.

No really...anyone.

[www.winsorlearning.com](http://www.winsorlearning.com)

800-321-7585



# STEM / STEAM INGENUITY AWARDS

## Ideate

Once we settled on the topic of bee transportation, we began thinking of solutions to the problem. In our interviews to learn more about the problem, we also shared our ideas. Here are the ideas we came up with and feedback received from experts as well as insights from our research:

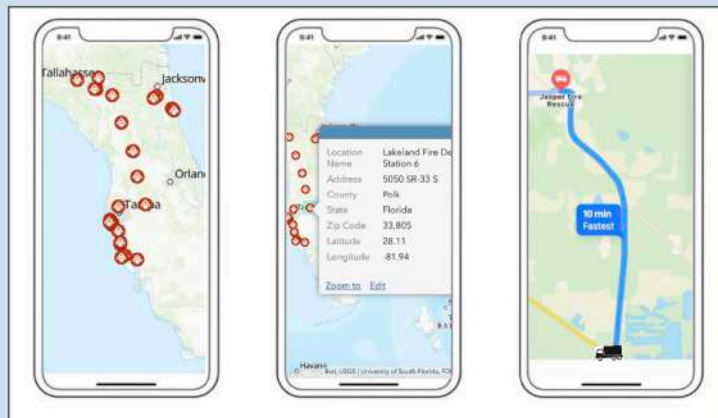
1. **Shock Absorption System** - majority of commercial beekeepers already use these
2. **New Hive Design** - build a hive from heat reflective materials; already exists
3. **Paint Hive with Reflective Paint** - paint hives with reflective paint; beekeepers already paint them white; several owners of hives didn't believe this would make a difference
4. **Reflective Net** - create a reflective mesh that would reflect the sunlight while still letting the bees get out of their hives to cool off; has potential but the material would need to be very breathable; if it is too expensive, owners won't buy
5. **Automatic Watering System/Misting System** - system that would regularly water or mist to cool off hives; little room to carry water canisters; would take up too much room and add additional weight
6. **Cooling System** - researched portable systems; custom systems would be too expensive; many beekeepers don't use their own trucks
7. **App to Monitor Temperature and Humidity** - app already exists, Broodminder; app is free for those that purchase the monitors
8. **Water Locations App** - application that would guide you to the nearest water source, so when the hives overheat the bee driver could easily locate the nearest gas station with water or fire station so they could water their hives; solution does not exist

We listed all of the ideas on the board and took a team vote, choosing the four with the most votes. We completed more research and then narrowed it down to our final solution, again taking another vote. We admit it was difficult for us to finalize our solution. This process took us three months to complete.

## Prototype



Our app logo and screenshot from ArcGIS



**BeeCool** identifies the locations of close water sources such as gas stations, public rest stops, or fire stations that can be easily accessed by truck drivers to water down bee hives. Drivers can then use the GPS built into their phones to navigate to the closest location identified on the app. Our app will be created using free [ArcGIS software](#).

We are building our app by creating a database of water sources close to major trucking highways along typical routes used by commercial beekeepers. We are using free ArcGIS software to overlay the locations onto the maps. This will allow drivers to use GPS to navigate to the identified locations. Our next steps:

1. Finish building the database for Florida to help with starting a prototype.
2. Learn how to use the ArcGIS Online, web-based mapping software. (Free licenses for school).
3. Build the interactive web map.
4. Share our app idea with commercial apiarists for feedback.
5. Complete a cost analysis - what will it cost us to build and market the app.



**the same kid he  
was a year ago.**

Now he has  
***All About® Reading.***



I pause ... then I jump onto the wild snake and haul it off. I have saved the kids!



20



Based on the Orton-Gillingham approach,  
*All About® Reading* is..

- Multisensory
- Customizable
- Mastery-based
- Suitable for all ages and learning styles



**715-477-1976 | [www.AllAboutReading.com](http://www.AllAboutReading.com)**



## STEM / STEAM INGENUITY AWARDS

Arden and her team did conduct a cost analysis which included their use of free software components (Google Sheets, ArcGIS Online, MapBox, iOS Swift), the need to pay for an App developer, and data storage.

They surveyed apiarists and heard back from 3 out of 15 people contacted and were able to interview Broodminder CEO Rich Morris about their idea.

Broodminder is a citizen science organization to encourage more people to get involved improving the honey bee population.



Webex Interview with Rich Morris February 10, 2022

### TEST / SHARING

We sent out a Google Survey to apiarists around the country. Our teacher helped us find different groups through Facebook and online searches. We sent emails to 15 individuals and 15 companies through their Contact Us on their website. We heard back from three. Two of the three indicated they would be interested in using the Bee Cool app. We also shared our idea with:

- **David Hackenberg:** Hackenberg Apiaries; our app would be useful and meet an important need; would use it with his drivers
- **Amar Nayegandhi:** Senior VP at Dewberry; expert in geospatial solutions; introduced us to ArcGIS; discussed how we might be able to lower costs by developing the maps through the free software
- **Rich Morris:** Developer of Broodminder; discussed process of app development; shared how Broodminder took six years to develop and how our idea to start with Fire Stations was smart
- **Tyler Walker:** Choctaw Bee Company; liked the app; discussed market and how trucking companies that use the app might have more success when bidding for business; said to focus on I-10 corridor (Florida to Arizona) and make sure water locations are as close to highway as possible
- **Nina Rossi:** Sekr community liaison; facilitated discussion with two of her team members to learn more about app development and how the Sekr map features were created; thought we had a neat solution that would benefit beekeepers as well as support growers
  - **Sepi Ghazal:** Sekr product manager; general overview of app and why it was developed; discussed how they researched locations
  - **Haron Arama:** Sekr software engineer; provided cost information with app development; recommended free apps for building (MapBase, Swift); discussed how to connect app with API for map integration

## TOP DESIGNER

### Wyatt, 12.

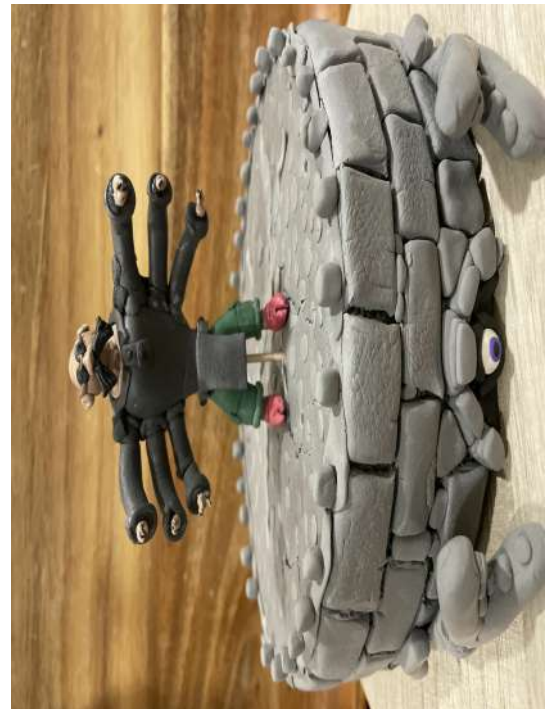
Wyatt is the top designer in the STEM / STEAM Ingenuity Awards. He is a 6th grader from Washington state and his teacher's name is Mrs. Hannah Fant from the Winster Center.



Wyatt submitted a business plan for Wyatt's Clay Creations.

During Covid lock down Wyatt found himself isolated from friends, so he found his passion for plants and art. He learned that plants thrive when given attention, so he started creating colorful clay creatures that keep plants company and protected from bad spirits while plant owners are gone.

Wyatt thanks his teachers, Mrs. Hanna.



## HONORABLE MENTIONS

Erik, 10, The Solar System. TX. Dishman Elementary  
Erik thanks his teacher, Mrs. Dinh.

Giuliana, 11, The Glass Reading Device. NY. Homeschool.  
Giuliana thanks her parents and uncle James who helped her find the motivation to work hard, and encouraged her to trust herself and her ideas.

Guinevere, 11. The Snow Fox. MN. Highland Elementary.  
I would like to thank my parent.

## ADVICE FROM 2022 WINNERS:

**Arden:** Don't create something that you aren't passionate about because if you aren't passionate about it you won't put in your best work and be truly committed to what you're creating. If you are passionate about what you're working on then remember to persevere and not give up because there will be highs and lows in the creation process, that's just how these things work. Second, using a design process helps keep track of what you have completed and your next steps.

**Wyatt:** Never give up. Don't limit your ideas.

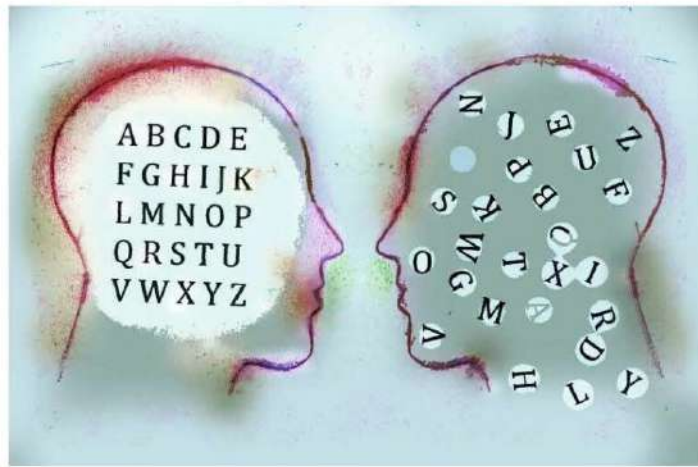
**Giuliana:** Never give up on your dreams because if you believe you can achieve. I know entering this contest was worth it even if I don't win because this has been an amazing experience.

**Guinevere:** Draw as much as you can. Keep drawing and never give up.

**Erik:** You can imagine lots of different things.







## **DYSLEXIC PARTICIPANTS WANTED for RESEARCH**

Volunteers wanted to take part in a Hunter College  
study on Reading and Error Recognition

### **YOU MAY BE ELIGIBLE IF YOU:**

- Are within the ages of 18 - 65 years.
- Are a monolingual English Speaker.
- Have access to a computer with internet capabilities.

- Survey study takes 45 - 80 minutes.
- Upon completion you are eligible to be entered into a raffle to win a **\$50 Amazon gift card!**
- If you are interested in participating, please email [gillian.glasser96@myhunter.cuny.edu](mailto:gillian.glasser96@myhunter.cuny.edu) or visit **[tiny.one/HunterProofreadingStudy](https://tiny.one/HunterProofreadingStudy)**

## HENRY WINKLER: FIND THE VERY BEST FOR YOURSELF

**"There is an emotional component to the learning challenged," says Winkler, whose parents called him "dumb dog" for his failures. "You don't have a sense of self because you're not keeping up with everybody... you feel terrible about yourself." - Henry Winkler**

Henry Winkler seems to be everywhere. He seems to be having the time of his life and giving generously of his life lessons and hopes for the future.

He's currently in the 3rd season of HBO's Barry, in an Emmy Award-winning role of a drama teacher, but he also finds every opportunity to share his life lessons about dyslexia and finding the very best for yourself.



## INSPIRATION

In a lovely [interview](#) in the New York Times, Henry shared how he fell in love with theater:

"He and his sister, Beatrice, were not close until years later, and he recalled with dread their fractured home life, the somber mood at the dinner table, the lack of praise and laughter and kids' art on the walls. His academic failings and learning disability added to that pervasive feeling of sadness at home. He didn't have cool friends and was always on edge. But in sixth grade, he saw the Moiseyev Dance Company in Madison Square Garden, and it took his breath away, the music and the bodies in flight. At 13 he saw "West Side Story," then went back 10 more times.

"My emotionality inside was always bigger than was appropriate," he said. "Man, oh, man." Maybe a life on the stage, on the screen, would be large enough to contain him. Winkler recalled how, as the credits rolled and the overture swelled and an actor like Albert Finney, Jimmy Stewart or James Dean came onscreen, he would get a feeling as if he'd been hit by lightning — a raw, electrified desire to be that guy. Watching the climactic scene in "Rebel Without a Cause," as Dean sobs over Sal Mineo's lifeless body, Winkler fell in love with the way physical motion alone could communicate such deep feeling."

Years later, he learned to rehearse his lines with an awareness of the repetition in his movements, using sense memory and muscle memory as a way to work around his dyslexia.

Winkler's dyslexia still makes him feel anxious and embarrassed, he told me, and it affects almost every interaction. Dyslexics are used to encountering obstacles and working around them, but the disability doesn't improve over time. He has trouble decoding his own handwriting and following maps and schedules; he can only remember left and right by thinking about which elbow hangs out the window when he's behind the wheel..."

Check out the link for his full interview. You may need to register, but it's free.



# PTSD AND DYSLEXIA

**" This study identified that emotional trauma took place in all participants, and this resulted in many having Post-Traumatic Stress Disorder manifestations as a result of returning to school for their own children. Participants still noted anger and resentment as adults towards their childhood teachers..." - Neil Alexander-Passe**



In Neil's [study](#) of PTSD or post-traumatic stress disorder in dyslexic adults in the United Kingdom, he found that all experienced emotional trauma in their time in the public school system and over half (64%) experienced PTSD or school avoidance symptoms when re-entering schools as parents, resulting in anxiety with many stating that they felt powerless as a child. PTSD symptoms occurred in the same frequency whether or not adults had achieved advanced degrees.

From the research paper:

"Normally PTSD is caused from short-term abuse or effects of a battlefield, but in the case of dyslexics, it is the result of 10 years of legally enforced mandatory education. The embarrassment and humiliation in the classroom by peers and authoritative figures such as teachers are strong experiences, which stay with people for the rest of their lives. Overall, males experienced the highest frequencies of PTSD with smell followed by small chairs and small pictures equally their triggers to their anxiety."

## Helping Children, Teens, Adults, and Families Realize Their Potential

assessment | consultation | treatment

Summit Center specializes in helping students with complex learning profiles and differences -- including kids who may be gifted, and those who might be both gifted and have challenges (known as twice-exceptional or 2e). We provide formal evaluations of strengths and challenges, and offer specific strategies and recommendations to guide growth and maximize potential.



### Offices in California:

San Francisco Bay Area 925-939-7500

Los Angeles Area 310-478-6505

[www.summitcenter.us](http://www.summitcenter.us)

[info@summitcenter.us](mailto:info@summitcenter.us)



*"Summit Center helped me find out I am both dyslexic -- and smart. I just think differently. Now I like school, and I have the tools I need to succeed."*



## How can students maintain their learning momentum over the summer?



Parent Teacher Associations (PTA) across the country are giving their children a boost over the summer with ReaderPens. Summer is an excellent time to add some new and proven text-to-speech supports to your current strategies empowering your children with independence and confidence while reading.

**Request FREE Trial Today!**



No Wi-Fi  
required



Access to  
print materials



Increases independence  
& confidence



Portable Text  
to Speech

What are 10 of the biggest myths about assistive technology in 2022?

Check out our blog to find out!: [www.scanningpens.blog/news/2022/4/22/10-of-the-biggest-myths-about-assistive-technology-in-2022](http://www.scanningpens.blog/news/2022/4/22/10-of-the-biggest-myths-about-assistive-technology-in-2022)



Scan here to hear what one PTA has to say about the ReaderPens they purchased



[www.scanningpens.com](http://www.scanningpens.com)



## WELL-BEING

See the above link for APA criteria regarding PTSD, but briefly the criteria share a stressful period, flashbacks and intrusive memories, avoidance of traumatic feelings or memories, negative effects on mood, memory, and thinking, and alterations in arousal and reactivity. The last criteria encompassing periods of irritability, hyper-vigilance, and or sleep disturbance.

### DYSLEXIA NOT BEING FORMALLY IDENTIFIED CONTRIBUTES TO TRAUMA

Again from the report: "Anger and resentment towards their childhood teacher still registered as adults, along with memories of injustice at the hands of childhood educationalists. Much of this anger was at their lack of diagnosis which meant they suffered for many years as having an undiagnosed learning difficulty."

This conclusion fits with our clinical experience; students who are formally identified after a period of difficulty in school, often find the "diagnosis" causes relief on the part of the student - with reasons for the struggle and possible ways to help. Despite this, surprising numbers of educational groups oppose efforts at better identification, (for instance the [California Teacher Association](#), stating that such programs are unnecessary and existing programs are sufficient for students.

### MOVING PAST THE TRAUMA

Although Neil's paper doesn't focus on ways to overcome PTSD symptoms, he does include a case report of one man who became tearful talking about his children's teachers and his helplessness at getting them help in the early grades. As they got older, though, he became more attuned about how he could have an important role for them in secondary school and ultimately had a leadership position as a parent representative helping make positive changes for all students in special education.

There are many ways to improve coping with PTSD. Talk to your family doctor if working with a professional might help.

The APA has this [list](#) of suggested treatments. At the top is cognitive behavioral therapy. You can read more about PTSD in general at [Verywellmind.com](http://Verywellmind.com)







## WHAT SHOULD WE DO THIS SUMMER?

Summer is usually a great time for dyslexic students - out of the daily grind of school. Hopefully the pandemic truly is easing and more activities are returning to normal.

### TAKE A BREAK

Students have been working hard and under stress these past months, so make sure they have a chance to really have some time for rest and recovery.

How long that break might be depends on how tired or stressed they may be as the school year comes to a close.

Having unscheduled time can do some good things - encourage some students to finally pick up a book of their choosing and begin to read, start a new hobby or return to one, or deepen relationships with family and friends.

### LOW STRESS ENJOYABLE READING

Students who have had very difficult times, including being depressed or anxious, may need their summer largely unscheduled, although if there is a way to keep up some low stress reading that might include reading along with listening, it might keep students from losing reading progress over the summer.

Reading old favorites, video game strategy books, graphic or illustrated novels, magazines, or combining watching and reading with movie-book pairings can all be good ways to maintain or even improve reading fluency skills.



Multisensory solutions for reading.



- **EVERYONE** can be an effective multi sensory teacher
- More than 40,000 educators are using the system
- Comprehensive
- Quick to Implement

International  
**DYSLEXIA**  
Association®

 **National  
Center for  
Learning  
Disabilities**

National Center for Learning Disabilities, the International Dyslexia Association have evaluated the Sondag System(r) and deemed that the program contained the required elements for teaching reading identified by the Nation Reading Panel.

## SUMMER

### EXPERIENCE THE WORLD AND DEVELOP STRENGTHS

Experience is a powerful way for dyslexic people to learn - so think about summers as a way for getting students out into the real world experiencing new things. It may be visiting and experiencing something new, traveling to take in a different time and culture, and meeting new people. Travel to national parks and historical landmarks. play sports, and take in the great outdoors.

Summer is a good time for students to get summer jobs, explore activities they might be interested in for future careers, and develop leadership skills by volunteering, planning projects, and helping carry them out.

### SUMMER SCHOOL, TUTORING, ASSISTIVE TECHNOLOGY

Some families may want to pursue summer tutoring or school if it might help them with the upcoming school year. This can be valuable if classes or tutoring are tailored to what a student needs. Students have less stress from other school demands over the summer - so if the instruction is well matched to student needs, she or he can make progress, and reduce academic pressures in the upcoming school year. Some summer schools or camps for dyslexic students also interweave fun outdoor or extracurricular activities with reading and writing work, making the days pass quickly.

Summer may also be a good time for students to try out and get proficient at assistive technology. While some students may take easily to technology, others will have more trouble. Use the summer to experiment with and decide on favorite apps and devices that will help them as school work demands increase in the upcoming school year. Students transitioning to middle school, high school, or college, might especially find it a good time to pick up these skills. Some colleges and professionals hold assistive technology summer camps, while other freelance professionals offer services. Sometimes training can also be conducted remotely. Private schools of dyslexia may also have teachers that offer mini-camps or workshops for students.



## Back by popular demand

# SUMMER RESCUE PACKAGE



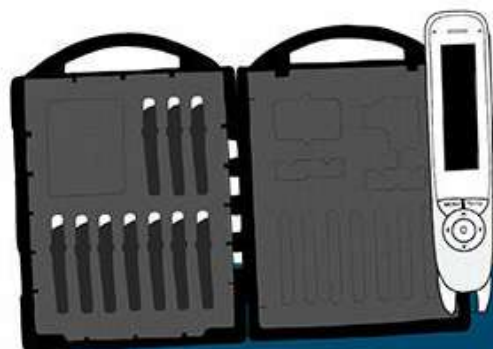
All across America, educators are working diligently on their catch-up strategies to help students overcome literacy obstacles that may have arisen over the past year.

Given the academic year we have just had, setting up effective summer learning will be no easy task. For many students, the opportunity to sustain high-quality learning during the summer will make all the difference in the fall.

Whatever your plans might be, this summer will be unique for everyone which means it's the perfect time to provide your students with the best tools to meet their full potential. Adopt some proven text-to-speech supports into your current strategies to nurture student independence. It's a game-changer!

The **Summer Rescue Package** allows schools and districts to gain additional value out of their Scanning Pens' purchases. With every Class Pack purchase, customers of the Summer Rescue Package will receive one free pen plus a fun activities packet.

**This offer runs from June 1 - July 31**



### Schools and Districts

Buy a Class Pack and get:

- 1 Free pen
- Fun Activities Packet



### Parents

Buy a scanning pen and get:

- Fun Activities Packet
- Entered into a drawing for a \$40 Amazon Gift Card



**Let's Talk!** You can learn more about the Summer Rescue Package, or start your order, by contacting us at 727-316-8101 or visiting [www.scanningpens.com](http://www.scanningpens.com).

*"Summit Center helped  
me find out I am both  
dyslexic -- and smart.  
I just think differently.  
Now I like school, and  
I have the tools I need  
to succeed."*

## **Helping Children, Teens, Adults, and Families Realize Their Potential**

**assessment | consultation | treatment**

Summit Center specializes in helping students with complex learning profiles and differences -- including kids who may be gifted, and those who might be both gifted and have challenges (known as twice-exceptional or 2e). We provide formal evaluations of strengths and challenges, and offer specific strategies and recommendations to guide growth and maximize potential.



**SUMMIT  
CENTER**

R e a c h   N e w   H e i g h t s

### **Offices in California:**

San Francisco Bay Area 925-939-7500

Los Angeles Area 310-478-6505

[www.summitcenter.us](http://www.summitcenter.us)

[info@summitcenter.us](mailto:info@summitcenter.us)





# AUDIO STUDY FOR DRIVERS TESTS

If it's Spring, then it must be time for driver training!

Many Departments of Motor Vehicles are poorly equipped to meet the needs of the neurodiverse community and it may not be obvious how to access an audio version of the drivers manual (our state manual is 180 pages long!)



## AUDIO DRIVING MANUAL

Access an Audio version for your state at [Driving-tests.org](https://driving-tests.org). If you Google search your state and the preceding link, you can find their 2022 audio manual. For example, [here](#) is California's.

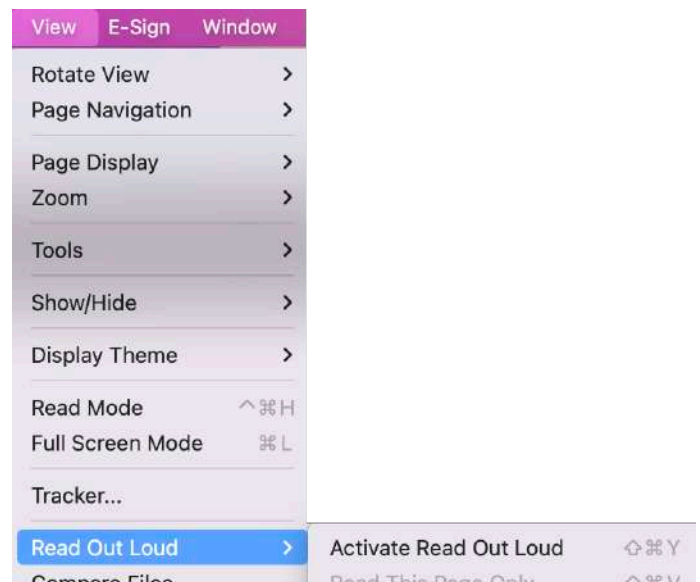
## DOWNLOAD THE DRIVING MANUAL IN PDF, THEN USE TEXT-TO-SPEECH

An alternative is to download your state driving manual in pdf format, then use free [Adobe Acrobat's Read Outloud](#) or a paid text-to-speech program like [Voice Dream](#) to read it to you.

You can also use [Natural Readers Online for free](#)  
You can also choose to download an MP3 and listen while you jog or work out.

[MacOS can convert text to an mp3 using iTunes.](#)

Happy driving!







## DYSLEXIA FOR TEACHERS ONLINE COURSE

### For General Classroom Teachers

How Dyslexia Presents

What Good Remediation Looks Like

- » Evidence-Based Strategies that Work
- » Ways to Support with Accommodations
- » Gifted, ELL, Social Emotional & more!

### CLOCK HOURS & GRADUATE CREDITS



Dyslexic Advantage &  
Seattle Pacific University

# Discover Your Learning Ability

Churchill's proven methods and well-trained faculty change the lives of children who struggle with dyslexia, ADHD and language-based learning disabilities.

At Churchill, we know our success is measured not by how many students we impact, but by the impact we have on any one student!



**CHURCHILL**  
CENTER & SCHOOL  
National Leader in Learning Disabilities

[churchillstl.org](http://churchillstl.org)  
314-997-4343

# DYSLEXIC ADVANTAGE PREMIUM SUBSCRIPTION



August 2021 Premium



July 2021 Premium



June 2021 Premium TECH



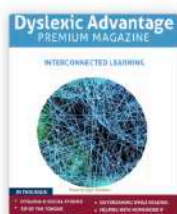
May 2021 Premium



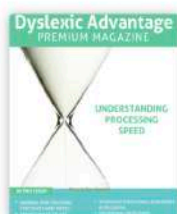
April 2021



March 2021



February 2021



January 2021

## THE MOST COMPREHENSIVE RESOURCE FOR DYSLEXIA

- Parents
- Teachers and Professionals
- Adults with Dyslexia

**SUBSCRIBE**

## We Take the Struggle Out of Reading and Spelling



### Easy to Teach, Easy to Learn!

- Multisensory Orton-Gillingham approach
- Lightly scripted "open and go" lesson plans
- Mastery-based with no gaps
- Suitable for all ages and learning styles
- Lifetime support, one-year guarantee



*All About® Reading* is a fun and engaging program that starts with essential pre-reading skills and continues on to teach all five key components of reading.

*All About® Spelling* teaches the phonics, rules, and spelling strategies your student needs to become a proficient speller for life.



715-477-1976 | [www.AllAboutLearningPress.com](http://www.AllAboutLearningPress.com)





## **Dyslexia Legislation Passes Idaho House Families Speak**

**Idaho 6 News**



## **Train Teachers Re: Emotional Toll Dyslexic Students** **Psychology Today**



## **The Dyslexic Experience (Interviews)** **Schwab Dyslexia**



## **How Minnesota Is and Isn't Teaching Reading** **Minnesota Reformer**



## **Take Time for Summer Fun** **Yale Center for Dyslexia and Creativity**



## **When To Be Concerned About a Struggling Reader** **US News and World Report**



PREMIUM ISSUE SEVENTY-EIGHT JUNE 2022

# Dyslexic Advantage PREMIUM MAGAZINE



## TAMING THE MONKEY MIND

- GRIT AND RESILIENCE
- POOR OUTCOMES LONG TERM OUTCOMES READING RECOVERY
- ROGUE HERO SAS FOUNDER DAVID STIRLING
- MANAGING MATH
- PAUSING WHILE WRITING

# PREMIUM



- Taming the Monkey Mind
- Grit and Resilience
- Founder of the Special Air Service
- Reading Recovery Curriculum
- Managing Math
- Pausing While Writing

## SUBSCRIBE

It's just  
\$5 per month!

## Homeschooling Dyslexia Online Course for Parents

Includes 1 Year  
Access to a Private  
Q & A Forum

Reading, Writing,  
Math, Technology





# Discover Your Learning Ability

Churchill's proven methods and well-trained faculty change the lives of children who struggle with dyslexia, ADHD and language-based learning disabilities.

At Churchill, we know our success is measured not by how many students we impact, but by the impact we have on any one student!

**CHURCHILL**  
CENTER & SCHOOL  
National Leader in Learning Disabilities

[churchillstl.org](http://churchillstl.org) | 314-997-4343



## ARTSHARE: CLAY CREATIONS WITH WYATT



Wyatt, 12. Winston Center. WA.

This sculpture was inspired by "Mega Glaglie" Pokemon.

Wyatt was also our Top Designer in our Ingenuity Awards. Isn't he amazing?

Do you have some art to share? Click [HERE](#).





"I feel like people are expecting me to fail, therefore, I expect myself to win." - Lewis Hamilton